

# 1 Find a Location for Stratus 7 and Mount it

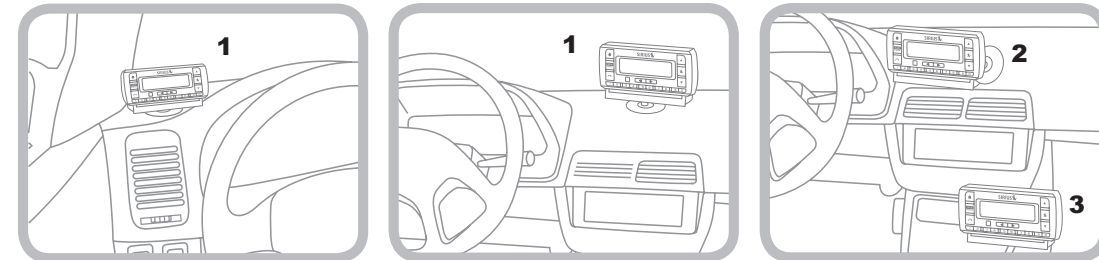
Select either the **Dash Mount** method or the **Vent Mount** method for your Stratus 7. You will need a phillips-head screwdriver to complete the installation.

**TIP:** You can take advantage of the wire guide channel across the back of the Vehicle Dock to organize the wires which connect to the dock.

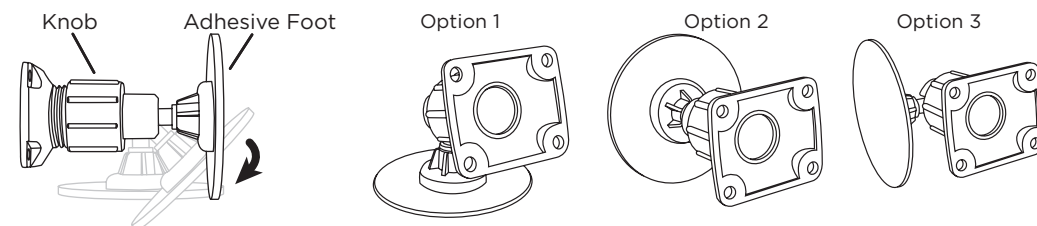
## Dash Mount Method:

**IMPORTANT:** The air temperature needs to be at least 60°F to install the Dash Mount. If needed, turn on the heater in your vehicle.

**A.** Select a flat surface for the Dash Mount with ample room for Stratus 7. Avoid mounting on leather surfaces. Choose a location that doesn't interfere with the driver's vision or access to driving controls, one that won't interfere with the deployment of airbags or other safety equipment, and makes Stratus 7 easily accessible for operation. (Airbag locations are typically marked with "SRS" logos.)



**B.** Orient the adhesive foot so that Stratus 7 is easily accessible. Loosen the knob and adjust the adhesive foot to position **1**, **2**, or **3**, and then tighten it.

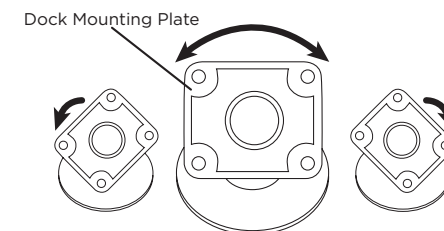


**C.** Attach the Dash Mount to the *PowerConnect* Vehicle Dock using the 4 provided screws. If you plan to use the wire guide channel across the back of the Vehicle Dock to organize the wires, do not fully tighten the screws. If not, tighten the screws.

**D.** Clean the mounting surface in the vehicle with the alcohol preparation pad and let it dry thoroughly.

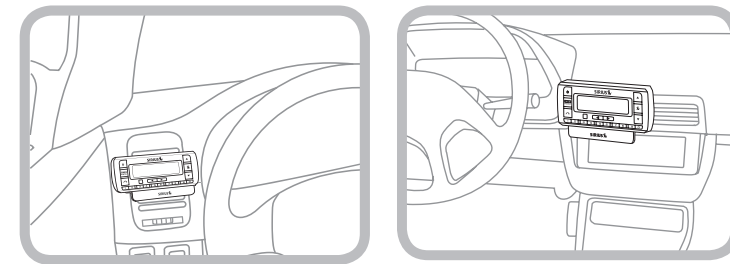
**E.** Once the surface is dry, remove the adhesive liner. Press and hold the Dash Mount in place for 30 seconds. Allow the adhesive to cure for 2-4 hours.

**F.** You can tilt the dock mounting plate in your preferred direction.



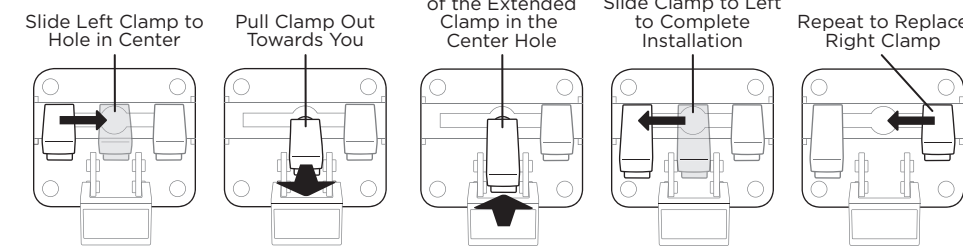
## Vent Mount Method:

**A.** Select a vent with ample room for Stratus 7, one that won't interfere with the deployment of airbags or other safety equipment, and makes Stratus 7 easily accessible for operation. (Airbag locations are typically marked with "SRS" logos.)



**B.** Some vents have recessed louvers. If yours are recessed, remove the regular vent clamps and install the extended vent clamps.

### Vent Mount Rear View

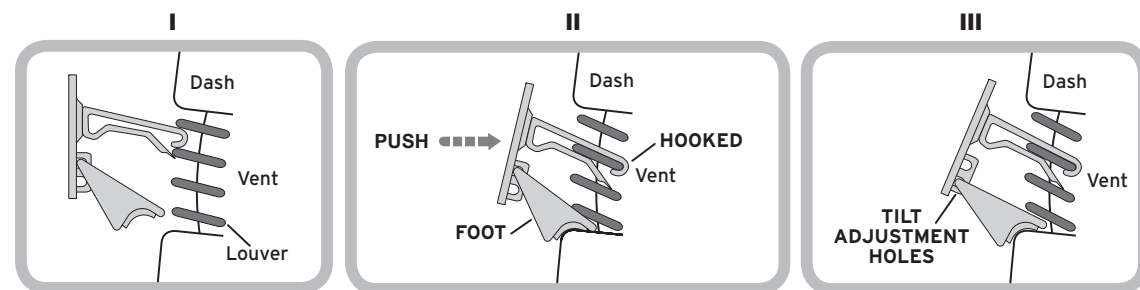


Round End → Orientation ←

**C.** Attach the Dash Mount to the *PowerConnect* Vehicle Dock using the 4 provided screws. If you plan to use the wire guide channel across the back of the Vehicle Dock to organize the wires, do not fully tighten the screws. If not, tighten the screws.

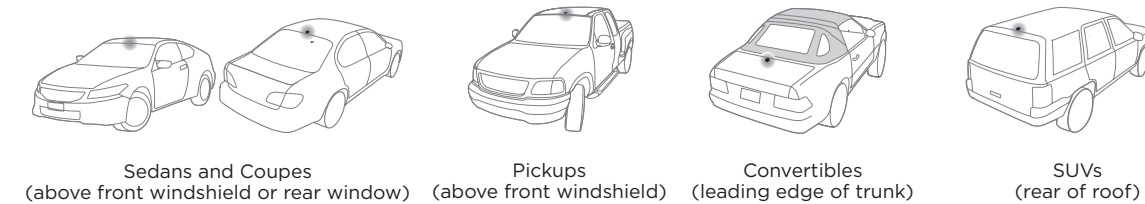
**D.** Install the Vent Mount onto the vehicle vent. (Note that for clarity the illustrations below do not show the Vehicle Dock attached to the Vent Mount.)

- i.** Insert the vent mount into the vent opening.
- ii.** Push until hooked on the rear of the vent louver. Rest the foot against the bottom of the vent.
- iii.** If necessary, adjust the tilt of the Vent Mount by repositioning the foot to a different tilt adjustment hole.



# 2 Mount the Magnetic Mount Antenna

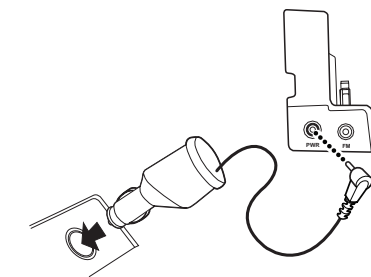
- A.** Mount the Magnetic Mount Antenna outside your vehicle, on a clean and dry horizontal surface that will always face the sky.
- B.** Choose the location for the antenna according to your type of vehicle. Center it between the left and right sides, and away from other antennas.



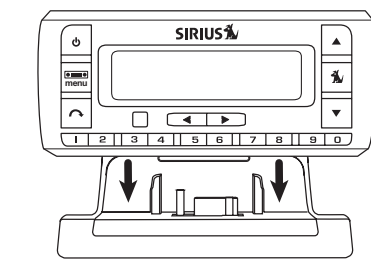
**TIP:** Use the Alcohol Prep Pad to clean the surface.

# 4 Connect the PowerConnect Power Adapter

**A.** Insert the *PowerConnect* Power Adapter into your vehicle's 12 volt power adapter or cigarette lighter socket. Plug the other end into the **red PWR** connector on the side of the *PowerConnect* Vehicle Dock.



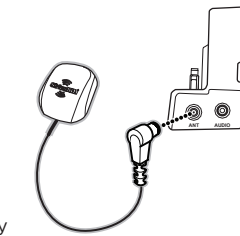
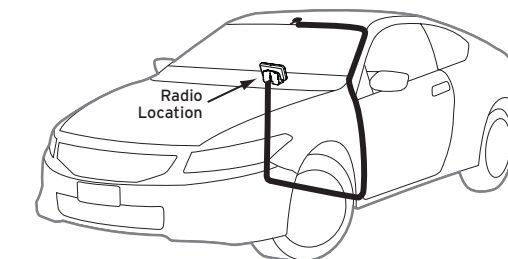
**B.** Place Stratus 7 into the dock and press the **Power** button.



# 3 Route the Antenna Cable

**NOTE:** These instructions are for a sedan or coupe where the antenna is mounted above the front windshield. The Stratus 7 User Guide (with Vehicle Kit) has detailed antenna cable routing instructions for all types of vehicles. Go to [www.siriusxm.com/guides](http://www.siriusxm.com/guides) for the User Guide.

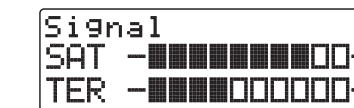
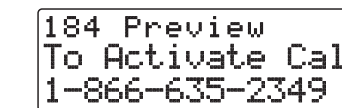
- A.** Tuck the antenna cable under the windshield rubber molding and run it to the nearest corner.
- B.** Route the cable out of the molding and into the rubber weather stripping around the door opening.
- C.** Lift the weather stripping. Tuck and run the cable inside it to the bottom of the door opening. Replace the weather stripping.
- D.** Pull the cable out and route it to Stratus 7.
- E.** Plug the Magnetic Mount Antenna connector into the **silver ANT** connector on the side of the *PowerConnect* Vehicle Dock.



**TIP:** Include enough slack in your routing to accommodate open doors or the hood lid. Coil any excess cable in a hidden location and keep it away from any vehicle pedals or controls.

# 5 Verify Signal Reception

- A.** Be sure the vehicle is outside and the antenna has a clear view of the sky.
- B.** Verify that you are receiving the Sirius signal. The Stratus 7 Radio should be tuned to Sirius channel 184, the Preview channel. There should at least be two bars in the upper right corner of the screen that denotes antenna signal strength. If not, be sure that you have mounted the antenna on the outside of the vehicle, as shown in step 2, and that the vehicle is parked outdoors with a clear view of the sky. Move the vehicle away from any obstructed area, for example, if you are parked in a garage, or parked near a large structure.



**C.** You can also press and hold **menu**, and press ▼ to scroll to and highlight **Signal**. Press the **Select** button to display the **Signal** screen. The Satellite and Terrestrial bars show the strength of the signal being received. If the signal reception is good, press and hold **menu** to return to Sirius channel 184, the Preview channel.



KIT INCLUDED  
VEHICLE

Dock & Play Radio

## STRATUS 7 QUICK START GUIDE



Self installation instructions and tips are provided for your convenience. It is your responsibility to determine if you have the knowledge, skills and physical ability required to properly perform an installation. SiriusXM shall have no liability for damage or injury resulting from the installation or use of any SiriusXM or third party products. It is your responsibility to ensure that all products are installed in adherence with local laws and regulations and in such a manner as to allow a vehicle to be operated safely and without distraction. SiriusXM product warranties do not cover the installation, removal or reinstallation of any product.

Sirius XM Radio Inc.  
1221 Avenue of the Americas  
New York, NY 10020

siriusxm.com

1.866.635.2349

© 2017 Sirius XM Radio Inc.

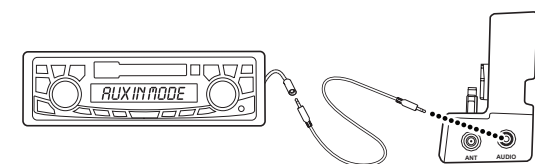
SSV7V1QSG 170501a

## 6 Connect the Audio

Decide on one of the following in-box audio connection options. You can also refer to "Connect the Audio" in the Stratus 7 User Guide (with Vehicle Kit) for additional audio connection options, such as a cassette adapter or the FM Direct Adapter (FMDA) (both sold separately). Go to [www.siriusxm.com/guides](http://www.siriusxm.com/guides) for the User Guide.

**Option 1: Best:** Use the provided **Aux In Cable**, if your vehicle's stereo system has an auxiliary input jack.

**A.** Plug one end of the cable into the **green AUDIO** connector on the side of the **PowerConnect** Vehicle Dock and the other end into the auxiliary input jack on the vehicle's stereo system.



**B.** Turn on your vehicle's stereo system and set it to play from the auxiliary input source.

**C.** You should hear Sirius channel 184 through your vehicle's stereo system.

**D.** If you are using the wire guide channel across the back of the Vehicle Dock to organize the wires, place the wires in the guide and then tighten the 4 screws to securely attach the mount. The installation is complete.

**TIP!** Refer to your vehicle's owner's manual to find the location of the auxiliary input jack, or consult the vehicle dealer.

**Option 2: Good:** Use the **PowerConnect** feature of Stratus 7. **PowerConnect** plays the Sirius audio through your vehicle's FM radio.

**A.** Use the SiriusXM FM Channel Finder at [www.siriusxm.com/fmchannel](http://www.siriusxm.com/fmchannel). Go to the website and enter your zip code. The Channel Finder will suggest a list of available FM channels in your area. For convenience, write down or print out the list.

**B.** Pick the first FM channel on your list. Tune your vehicle's FM radio to this FM channel.

**C.** Set your Stratus 7 to transmit on the same FM channel:

**i.** Press and hold **menu** until the menu options are displayed.

**ii.** Press **▼** to scroll to and highlight **FM Settings** and press the **Select** button.

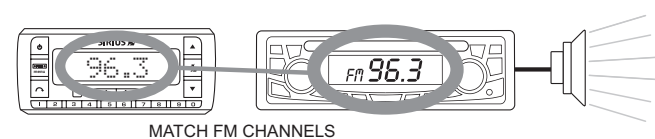
**iii.** If **FM Channels** is not highlighted, press **▲** to highlight **FM Channels**. Press the **Select** button.

**iv.** Press **▼** to scroll to and highlight the storage location **FM2**. Press the **Select** button.

**v.** Tune to the FM channel you found in step 1. Press **▼** and **▲** to tune in steps of .2, i.e., 99.3 to 99.5. Press **◀** and **▶** to tune in steps of 1, i.e., 99.3 to 100.3. Press the **Select** button to select the FM channel.

**vi.** The FM channel you selected will be confirmed on the display screen and Stratus 7 will tune to the FM channel. Press and hold **menu** to return to the main display screen.

**D.** You should now hear Sirius channel 184 through your vehicle's FM radio. If you are not satisfied with the audio quality, move to the next FM channel on your list and repeat the process. Continue until you have found an FM channel with which you are satisfied.



**E.** If you are using the wire guide channel across the back of the Vehicle Dock to organize the wires, place the wires in the guide and then tighten the 4 screws to securely attach the mount. The installation is complete.

**TIP!** You may find an FM channel with static or silence on your vehicle's FM radio that does not work with your Stratus 7. It is possible that some type of inaudible interference is present that prevents reception of the SiriusXM broadcast. Your only options are to use another FM channel or a different audio connection method.

## 7 Subscribe

Subscribe your Stratus 7 to the Sirius service:

**A.** Make sure your Stratus 7 is turned on, receiving the Sirius signal, and tuned to Sirius channel 184, the Preview channel, so that you can hear the Sirius audio.

184 Preview  
To Activate Call  
1-866-635-2349

\*The phone number shown above may differ from the one shown on your Stratus 7. All numbers are valid.

**B.** Make a note of your Sirius Radio ID. You can find it by selecting **Radio ID** in menu items, by tuning to channel 0, on a label on the bottom of the gift box, and on the label on the back of your Stratus 7.

**C.** To subscribe:

• Online: Go to [www.siriusxm.com/activatenow](http://www.siriusxm.com/activatenow) to access or set up an online account, subscribe to the service, and activate your Radio.

OR

• By phone: Call **1-866-635-2349**.

Activation usually takes less than 5 minutes, but sometimes may take longer. We recommend that your radio remain on until activated. When your service is activated, your Stratus 7 will display an alert message. To continue, press any button.

Press **▲** or **▼** to tune to other channels, and **◀** or **▶** to browse the different categories of channels. Learn what all the buttons do in the panel below.

## Stratus 7 Button Functions

**Power Button**  
Press to turn Stratus 7 on and off.

**FM / Menu Button**  
**FM:** Press to access and cycle through FM presets.  
**Menu:** Press and hold to access advanced features and configuration options; in configuration options, press and hold to return to main display screen.

**Up and Down Buttons**  
Press to preview and tune channels through the channel lineup; also press to scroll through lists and highlight menu items.

**Select Button**  
Press to confirm selection of highlighted items in a menu or list; when not in a menu or list, press first before entering the channel number, to directly tune to a channel. Press and hold to go back to the previous channel.

**Jump Button**  
Press to go back to the previous channel to which you were listening.

**Left and Right Arrows**  
Press to search for channels by category.

**Number Buttons**  
Press to tune to a stored favorite channel, press and hold to store a favorite channel; also enter a channel number.



## Stratus 7 Main Display

When listening to a channel, information about the channel and what is currently playing is displayed.

Channel Name or Category Name  
Channel Number — 051 BPM  
Artist Name — Black Eyed Peas  
Song Title — Rock That Body  
Signal Strength

The Stratus 7 User Guide is available at [www.siriusxm.com/guides](http://www.siriusxm.com/guides).

## Specifications

### System

Power Requirements: 9-16 V DC, 500 mA (max)  
Operating Temperature: -4°F to +140°F (-20°C to +60°C)  
Audio Output: 1.0 V<sub>rms</sub> (max)

### Stratus 7 Radio

Dimensions: 4.5 in (W) x 1.9 in (H) x 0.7 in (D)  
115 mm (W) x 48 mm (H) x 17 mm (D)  
Weight: 2.3 oz (66 g)

### PowerConnect Vehicle Dock

Dimensions: 4.1 in (W) x 1.8 in (H) x 1.1 in (D)  
105 mm (W) x 46 mm (H) x 28 mm (D)  
Weight: 1.5 oz (43 g)  
Audio Connector: 1/8 in (3.5 mm) female  
Antenna Connector: SMB male

### PowerConnect Power Adapter

Dimensions: 3.7 in (W) x 1.7 in (H) x 1.3 in (D)  
94 mm (W) x 43 mm (H) x 34 mm (D)  
Weight: 2.4 oz (69 g)  
Input / Output: 9-16 V DC / 5 V DC, 1.5 A  
Cable Length: Approximately 4.6 ft (1.4 m)

### Vehicle Antenna

Type: SiriusXM Magnetic Mount  
Connector: SMB female, right angle  
Cable Length: Approximately 23 ft (7.0 m)

### Aux In Cable

Connectors: 1/8 in (3.5 mm) stereo male to 1/8 in (3.5 mm) stereo male  
Cable Length: Approximately 4 ft (1.2 m)

## Important Legal Information

© 2017 Sirius XM Radio Inc. "Sirius", "XM" and all related marks and logos are trademarks of Sirius XM Radio Inc. and its subsidiaries. "BBC" and "Radio One" are trademarks of the British Broadcasting Corporation and are used under license. BBC logo © BBC 1996. Radio 1 logo © BBC 2001. Cosmopolitan is a registered trademark of Hearst Communications, Inc. Elvis Radio logo © EPE Reg. U.S. Pat. & TM Off. IndyCar (and Design) are registered trademarks of Brickyard Trademarks, Inc., used with permission. Major League Baseball trademarks and copyrights are used with permission of Major League Baseball Properties, Inc. Visit the official website at MLB.com. Games subject to availability and change and may not include all spring training games. All rights reserved. NASCAR is a registered trademark of the National Association for Stock Car Auto Racing, Inc. The NBA identifications are the intellectual property of NBA Properties, Inc. and the respective NBA member teams. © 2016 NBA Properties, Inc. © 2016 NFL Properties LLC. All NFL-related trademarks are trademarks of the National Football League. NHL and the NHL Shield are registered trademarks of the National Hockey League. © NHL 2016 All NHL logos and marks and NHL team logos and marks depicted herein are the property of the NHL and the respective teams and may not be reproduced without the prior written consent of NHL Enterprises, L.P. The Home Ice channel is a registered trademark of XM Satellite Radio Inc. The Swinger Goller logo is a registered trademark of PGA TOUR, Inc. Visit [www.siriusxm.com/channelineup](http://www.siriusxm.com/channelineup) for updates. All programming/channel lineup/XM service subject to change or preemption. All other marks and logos are the property of their respective owners. All rights reserved.

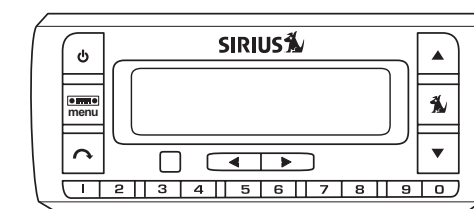
### IMPORTANT NOTICE: REQUIRED SUBSCRIPTION

Hardware and subscription sold separately, and activation fee required. Other fees and taxes may apply. **Subscriptions governed by SiriusXM Customer Agreement; see [www.siriusxm.com](http://www.siriusxm.com).** Prices and programming are subject to change. **Service automatically renews into the subscription Package you choose (which may differ from the Package which arrived with the Radio), for additional periods of the same length, and automatically bills at the then current rates, after any complimentary trial or promotional period ends, until you call us at 1-866-635-2349 to cancel.** XM U.S. Satellite service available only to those at least 18 years of age in the 48 contiguous USA and DC, while SiriusXM Internet Radio is available throughout our satellite area and also AK, HI and PR.

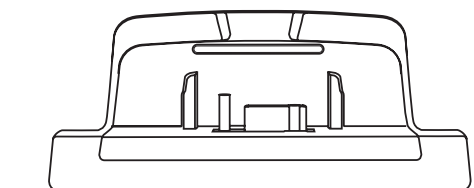
**FCC Statement:** The user is cautioned that changes or modifications not expressly approved by Sirius XM Radio Inc. can void the user's authority to operate this device. This device complies with Part 15 of the FCC Rules. Operation is subject to the following two conditions: 1. This device may not cause harmful interference. 2. This device must accept any interference received, including interference that may cause undesired operation. This equipment has been tested and found to comply with the limits for a Class B digital device, pursuant to Part 15 of the FCC Rules. These limits are designed to provide reasonable protection against harmful interference in a residential installation. This equipment generates, uses, and can radiate radio frequency energy and, if not installed and used in accordance with the installation instructions, may cause harmful interference to radio communications. However, there is no guarantee that interference will not occur in a particular installation. If this equipment does cause harmful interference to radio or television reception, which can be determined by turning the equipment off and on, the user is encouraged to try to correct the interference by one or more of the following measures: •Reorient or relocate the receiving antenna of the affected receiver. •Increase the separation between the SiriusXM equipment and the affected receiver. •Connect the SiriusXM equipment into an outlet on a circuit different from that to which the affected receiver is connected. •Consult the dealer or an experienced radio/TV technician for help. **WARNING!** The FCC and FAA have not certified this Satellite Radio Receiver for use in any aircraft (neither portable nor permanent installation). Therefore, Sirius XM Radio Inc. cannot support this type of application or installation.

## What's in the Box?

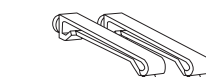
**CAUTION:** Do not attempt to install, activate, or adjust any of the setting options described in this Quick Start Guide unless your vehicle is parked in a safe location.



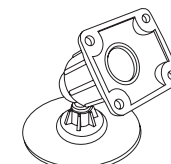
Stratus 7 Radio



PowerConnect™ Vehicle Dock



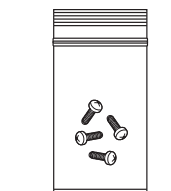
Vent Mount and Extended Vent Clamps



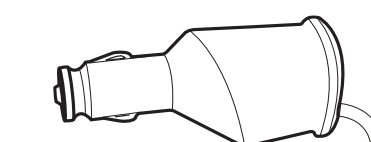
Dash Mount



Antenna & Dash Mount Alcohol Preparation Pads



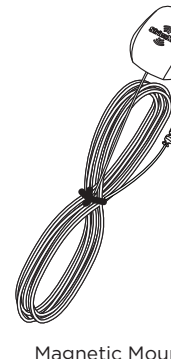
Screws (4)



PowerConnect Power Adapter



Aux In Cable



Magnetic Mount Antenna